

Manufacturers of Aluminium Extruded Sections & Profiles



Superfine
GROUP OF INDUSTRIES

Where Excellence Comes First



www.superfineindia.com

From a company to a group of industries

The foundation of Superfine Group was laid in the year 1994 by its two promoters - late CA. Satish K Katariya and CA. Ravindra K. Katariya.

Encouraged by the early success in the business of Photo Colour Lab, the promoters forayed into advanced technology based aluminium extrusion in the year 1998.

The entire extrusion plant is being operated on propane gas, which is the first of its kind in India. As a responsible corporate citizen and in keeping with its responsibilities towards the environment and the society, the group uses renewable energy generated by its wind power unit.

All through its growth from a company to a group of industries, the main thrust remains in always delivering products and services of the highest quality standards while its approach is in creating and strengthening relationships with the customers.

From strength to strength

The Superfine Group of Industries is one of the leading manufacturers of Aluminium Extruded Sections and Profiles in India. It draws its might from 8 aluminium extrusion press lines that include a 2200MT press, five 900MT presses, a 600MT press and one specialized extrusion line for critical aluminium products. This formidable strength is further bolstered by a Foundry, Cast house, Tool Room, fully-equipped Surface Finishing Plant, Aluminium Fabrication Unit, Test Lab and a highly efficient Quality Control System.

This facility is capable of extruding sections with a wall thickness as low as 0.30 mm and a width up to 272 mm. Presently, Superfine deals in aluminium alloys of AA 1xxx, 3xxx, 5xxx and 6xxx series.

Superfine offers a wide range of indigenous aluminium extruded sections and a product range spanning around 4500 aluminium profiles.

This capability as well as the confidence in meeting even the most demanding and stringent of market requirements is what encourages the company to explore and excel further and has led it to chalk out the roadmap to providing 2xxx and 7xxx series alloys.

From strength to strength

The company already caters to a wide spectrum of the aluminium extrusion market by offering revolutionary and intricate aluminium extrusions for different sectors & applications such as

- Structural & Architectural
- Solar ▪ Transport ▪ Defense
- Nuclear Stations ▪ Electronics
- Modular Furniture ▪ Automotive
- Luggage ▪ Car Accessories
- Electrical Conductors ▪ Aviation
- Refrigeration ▪ Green house
- AC Grills & Air Ducts
- Automation ▪ Engineering
- Communication
- LED lightning and many more.

This includes critical sections and tubes for automobiles and refrigeration industries.

In doing so, Superfine Group is saving and earning substantial foreign currency through its exports while also contributing to the country's economic might and growth.





Superfine Metals Pvt Ltd
Superfine Extrusions Pvt Ltd
Superfine Profiles & Extrusions Pvt Ltd

Factory: Supa M.I.D.C.





Superfine
GROUP OF INDUSTRIES
Where Excellence Comes First

- **8 PRESS LINE UNDER SINGLE MANAGEMENT
MORE THAN 4500 DIFFERENT ALUMINIUM
EXTRUDED PRODUCTS**
- **FACILITY FOR 1XXX, 3XXX, 5XXX, 6XXX SERIES
ALUMINIUM ALLOYS**
- **FULLY EQUIPPED REASEARCH & DEVELOPMENT
(R&D) DEPARTMENT**
- **SUPPLYING MATERIAL TO MORE THAN 21
DIFFERENT SECTORS**

Manufacturing Facilities

The Company has a very ideal combination of modern age technology in aluminium extrusions, technically sound machineries, Gas based Aluminium extrusion plants, Highly experienced professionals coupled with its own design and development department which facilitates to produce and deliver best quality Aluminium extruded sections and profiles.

Aluminium alloys casted in foundry includes

- AA 1060
- AA 1100
- AA 6063 (HE9 or 63400)
- AA 6061 (HE20 or 65032)
- AA 6351 (HE30 or 64430)
- AA 1050 (EC Grade)
- AA 6101 (E91)
- AA 6005
- AA 6082
- AA 6066

Foundry Division

The company is having In House PLC controlled 2 Melting furnaces of 10MT capacity each, which operates with Propane Gas (cleanest combustion fuel) and is fully equipped with state of art PLC controlled HOT TOP casting facility which can cast aluminium logs of 4", 5" and 8" Dia.



Committed to the cause

Today, Superfine Group has established global credibility with the industry, authorities and the public.

It has ISO 9001-2008 certification, which is the international benchmark for quality.

The Global Outlook

We use our expertise in producing aluminium extruded products of global standards for all user industries while conforming to international safety and environmental parameters.





Extrusion Division

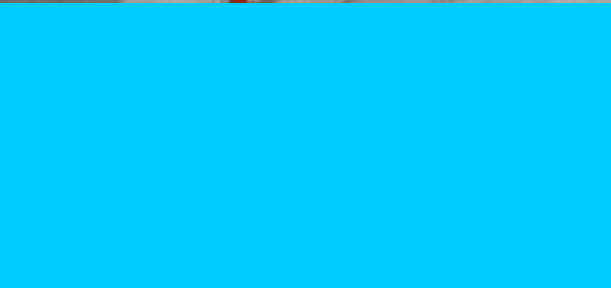
The company has eight aluminum extrusion press lines controlled through sophisticated SCADA based PLC technology.

2200MT Press – 1 nos (8" Container)

900MT Press – 5 nos (5" Container)

600MT Press – 1 nos (4" Container)

Specialized Extrusion Line for Critical Aluminium Products – 1 no



www.superfineindia.com



Tool Room

The company has its own Tools and Dies Development and Manufacturing facility which consists of band saw machine lathes, Vertical Milling Machines (VMC), CNC functioned Wire Cut, Electrical Discharge Machines (EDM), which are supported by CAD CAM Software. Die Nitriding facility is available within the plant. The tool room is fully equipped and capable of manufacturing high precision dies for extruding intricate profiles in a reasonably short period of time.

www.superfineindia.com

VMC



EDM



WIRE CUT



 **Superfine**
GROUP OF INDUSTRIES
Where Excellence Comes First





Anodizing Plant

Surface Finishing Plant & Aluminium Fabrication Unit

The company is having its own fully equipped aluminium anodizing plant which can anodize aluminum sections up to 21 feet long and anodized micron coating thicknesses up to 30 microns.

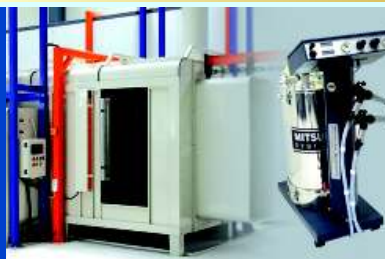
A powder coating unit which can coat aluminum sections up to 20 feet long and coating thicknesses up to 80 microns is also part of the unit.

A fabrication unit for making aluminium frames and capable of cutting the sections in 45 degree angle and punching the sections complete the picture.



www.superfineindia.com

POWDER
COATING
PLANT



Superfine
GROUP OF INDUSTRIES
Where Excellence Comes First



At the core of the company's manufacturing facility is its highly efficient quality control system. It is an ISO 9001:2008 certified organization.

The company has a fully equipped chemical & mechanical testing facility. The plant is equipped with a fifth **generation spectrometer** imported from **Spectro GMBH Germany** for performing the chemical analysis of all types of aluminium alloys which are casted and extruded here.



Ultimate Tensile Testing Machine (UTM), Brinell as well as Rockwell Hardness

Testing Machines for checking the tensile strength, yield stress, elongation and hardness of the extruded sections as well as a conductivity meter for measuring the electrical conductivity add up to the strength.

The company has an **Ultrasonic Flaw Detector** for checking internal defects in aluminium logs / billets as well as the finished products.

Webster imported from Webster instruments INC, Los Angeles ensure 100% quality checks of extruded sections, leaving nothing to chance.

Testing Facility (Test Lab)

Testing Facility (Test Lab)

CONDUCTIVITY METER



SPECTROMETER



HARDNESS TESTER



Testing Facility (Test Lab)

WEBSTER



UTM



ULTRASONIC FLAW DETECTOR





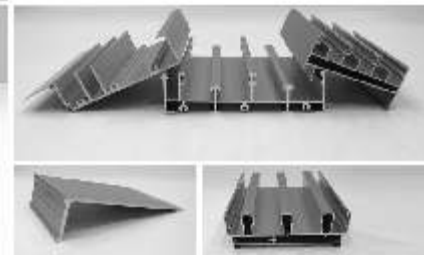
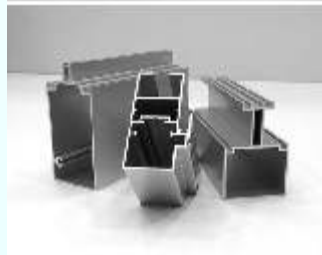
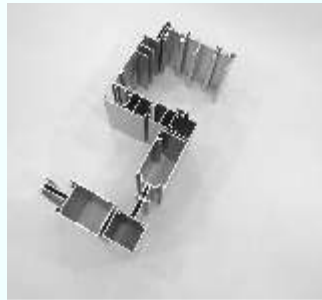
Superfine

GROUP OF INDUSTRIES

Where Excellence Comes First

Superfine Products



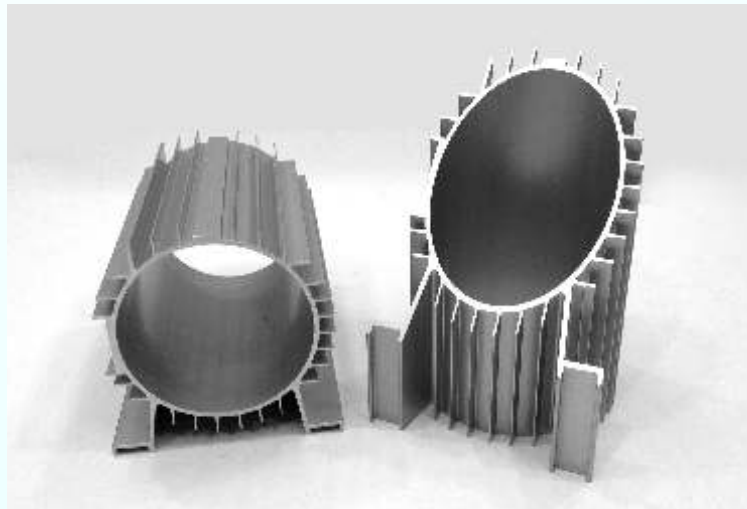






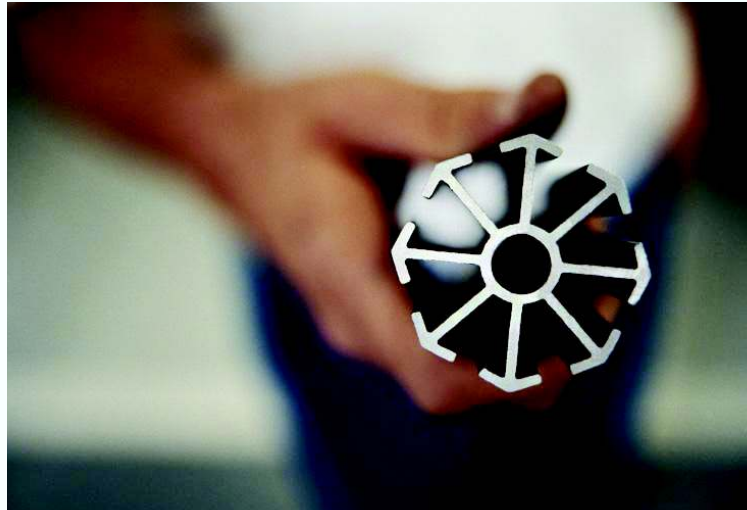
Transport





Electronics





Modular Furniture



Automotive



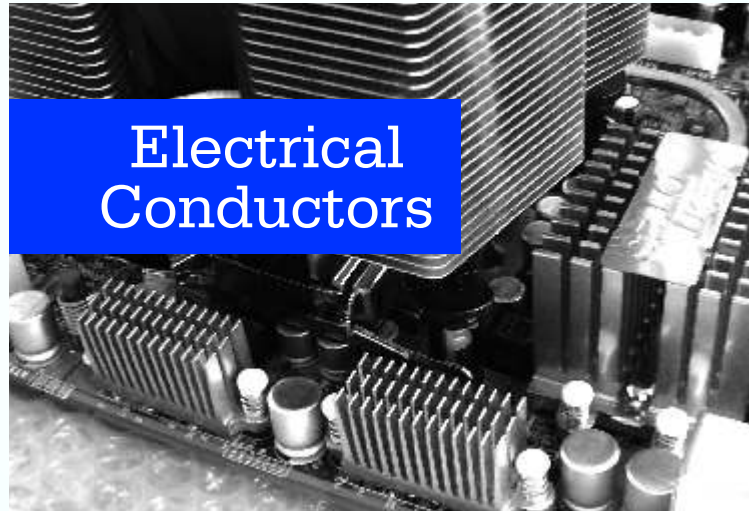
LED lightning



Marine



Car Accessories



Electrical
Conductors



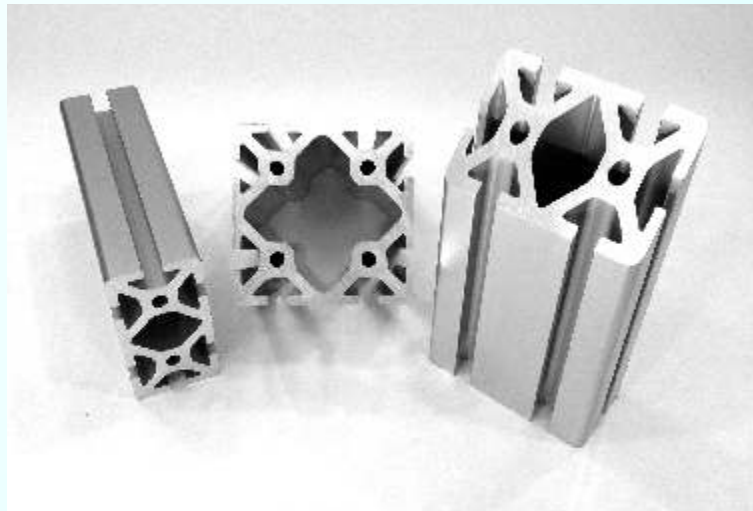
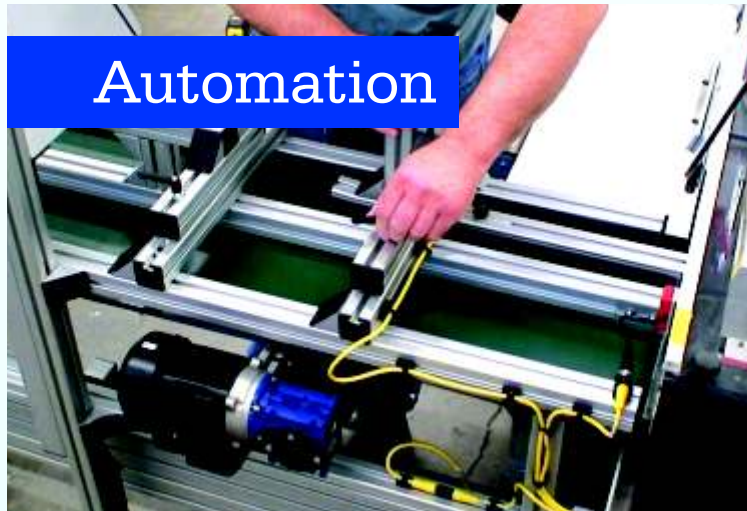
High Precision
Multi Port
Tubes

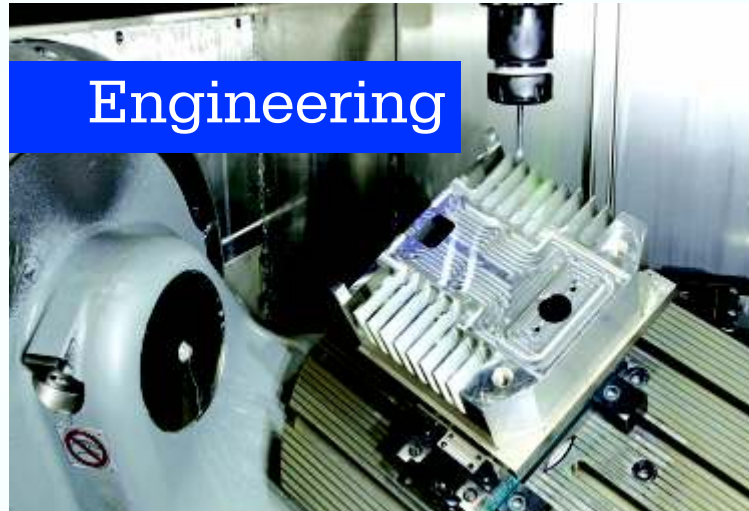




AC Grills
&
Air ducts

Automation

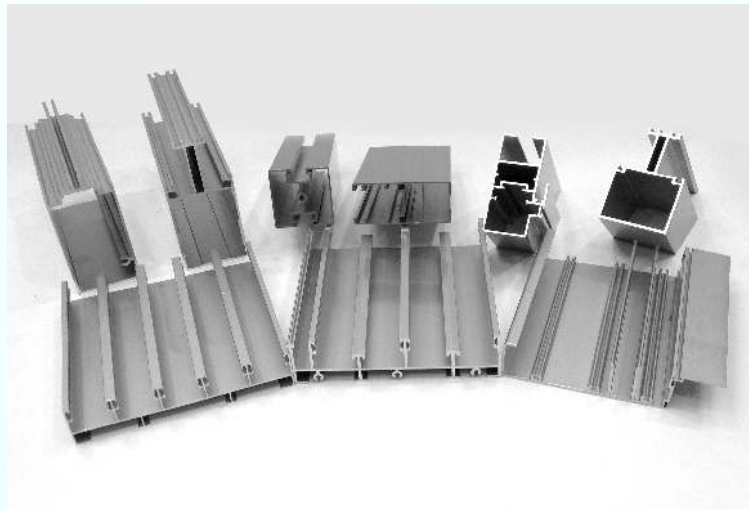




Engineering



Luggage



Communication



ISO 9001 : 2008

Certificate of Registration

SUPERFINE METALS PVT. LTD.

Plot No. E - 29, E - 39, Supa, M.I.D.C., Taluka - Parner, District - Ahmednagar, Maharashtra, India.

IQCS India Certify that the Quality Management System of the above organization has been audited in accordance with the requirement of the management system standards detailed below....

Standard : ISO 9001 : 2008
Scope of Registration : Manufacture and Supply of Aluminium Billets, Aluminium Extruded Sections and Profiles.
Certificate No. : 91/Q/5519
Certification Issue Date : 11th March 2013
Certificate Expiry Date : 10th March 2016

This certificate is valid for three years & Subject to the satisfactory completion of annual surveillance assessment, Lack of fulfillment of conditions set out for issuance of this certificate may render this certificate invalid.


Managing Director
IQCS INDIA

IQCS CERTIFICATIONS PRIVATE LIMITED

Formerly Known as "Institute of Quality Certifications Services (India)"

S, Akashchandra-A, Opp. to Subhash Mall, Shanti Park, Umrav, Nashik-422006, Maharashtra, India. +91- 0253 - 2410289
E-mail : info@iqcsindia.com / iqcs.global@gmail.com Web : www.iqcsindia.com Fax +91 0253 2410289

This certificate is accredited by Accreditation Service for Certification Bodies (EUROPE) Ltd.

8, Ferries Place, Bournemouth, Dorset, BH1, 6AU, United Kingdom, Tel 0044 (0) 1202 25 22, Fax 0044 (0) 870 838 10



ISO Certificate

www.superfineindia.com



Quality Policy



Superfine will continually **endeavour to**

- ✓ **Enhance quality, quantity and reliability of its products**
- ✓ **Upgrade quality management systems**
- ✓ **Achieve customer delight**
- ✓ **Improve skills of employees**
- ✓ **Achieve cost effectiveness**



Superfine

GROUP OF INDUSTRIES

Where Excellence Comes First

Regd. Office

"Pratibha" 1267, Dalmandai,
Ahmednagar 414001. Maharashtra - INDIA
Tel.: +91-241-2327220, 2327219, 2324389,
2347965, 2323602. Fax.: +91-241-2346536
Email: info@superfineindia.com

Superfine Metals Pvt. Ltd.

Factory: Plot No E 29 / E 39, Supa M.I.D.C.,
Tal. - Parner, Dist. - Ahmednagar.

Superfine Extrusions Pvt. Ltd.

Factory: Gat No 53 B, 17th Km. Stone, Nagar-Kalyan Road,
Vill-Bhalwani, Tal. - Parner, Dist. - Ahmednagar.

Superfine Profiles & Extrusions Pvt. Ltd.

Factory: Gat No 58/1, 17th Km. Stone, Nagar-Kalyan Road,
Vill-Bhalwani, Tal. - Parner, Dist. - Ahmednagar.

www.superfineindia.com

Ushering a Revolution in
Aluminium Extrusions and
Safeguarding Environment

Thank
You...